

## SOLUTIONS 5<sup>th</sup> SOCIAL SCIENCE ACTIVITIES (April 14<sup>th</sup> to 17<sup>th</sup>)

¡Recordad, es muy importante que comprobéis las soluciones (fijaos bien, son 4 hojas) y corrigáis todo lo que sea necesario en vuestra tarea! Y no olvidéis hacer los trabajos ordenadamente, según la opción que cada uno elija: en vuestros cuadernos; archivando bien las fichas, aquellos que las imprimen o creando una carpeta llamada SOCIAL SCIENCE, aquellos que lo hacéis directamente en el ordenador. Preguntadme cualquier duda que se os plantee.  
GOOD JOB! I'M PROUD OF YOU

- Activity book to pages 24 and 25.

### The population of Spain and Europe

Circle the odd one out. (RODEA LA QUE SOBRA)

- |    |                |   |
|----|----------------|---|
| a. | BIRTH RATE     | babies - 10/1,000 inhabitants - <u>male/female</u>          |
| b. | DEATH RATE     | 9/1,000 inhabitants - <u>gender</u> - deaths per year       |
| c. | NATURAL GROWTH | <u>47 million</u> - slowly increasing - births minus deaths |

What kind of migration is this? Write emigration or immigration.

- i. You leave Spain and go to live in France. EMIGRATION
- ii. You come to Spain with your family from Ecuador so that your parents can find work. IMMIGRATION

Write one more example of each kind of migration. (M.A.)

Emigration: Spanish people leave Spain to work in Germany.

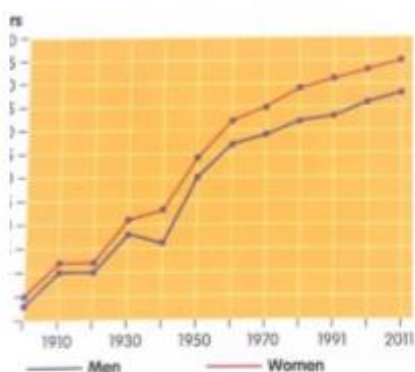
Immigration: People from Morocco come to live in Spain.

Define these terms.

Ageing population: A population that has more elderly people than young people.

Life expectancy: The number of years that a person will probably live.

Look at the population graph and answer the questions. Make hypotheses.



- a. Why do women have a longer life expectancy than men? There are behaviour and biological differences.
- b. Why do you think the gap in life expectancy is growing between men and women? Because there are lifestyle and behaviour factors: smoking, consumption of alcohol, accidents, wars...
- c. Why do you think men's life expectancy fell between 1930 and 1960? Many men died in wars.

1 Use the words to label the diagram.



2 Complete the mind map. Use these words.

not of legal working age – of legal working age – employed / unemployed

people who do not receive a salary – people who are too ill to work – healthy



3 Look and circle the correct words.



- This is a photo of an urban / a rural population.
- The people / population density in this place is probably very low / high.
- There are many / few inhabitants per square kilometre.

## ➤ THE POPULATION OF SPAIN AND EUROPE

### (WORKSHEET)

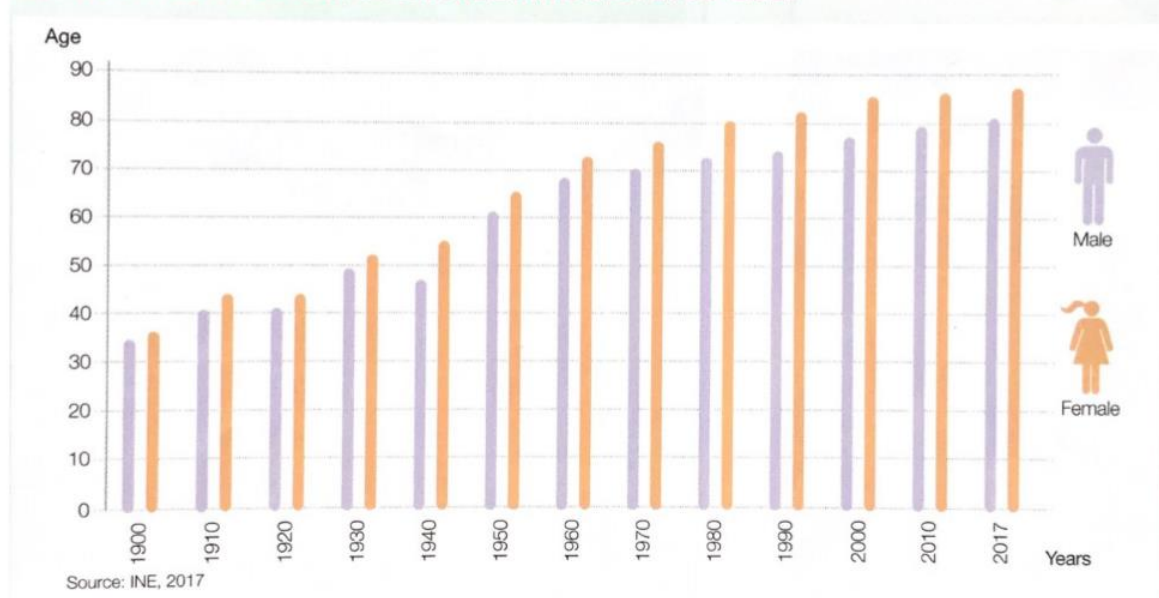
(You can do it on your notebook, but please write the title of the unit using capital letters).  
(Puedes hacer la ficha en tu cuaderno, pero por favor escribe el título de la unidad con letras mayúsculas).

#### 1.- Complete the following definitions:

- **Birth rate (Índice de natalidad)**  
Birth rate is the number of babies born in a place in one year.
- **Death rate (Índice de mortalidad).**  
Death rate is the number of people who die in a place in one year.
- **Natural growth (Crecimiento natural).**  
It is the difference between the number of people who are born in an area in one year and the number of people who die.
- **Emigrants (Emigrantes).**  
Emigrants are people who leave their country to live in another country.
- **Immigrants (Inmigrantes).**  
Immigrants are people who come to live in a new country.
- **Migration rate (Índice de migración).**  
It is the difference between the number of immigrants and the number of emigrants.
- **Life expectancy (Esperanza de vida).**  
Life expectancy is the number of years that a person is expected to live.
- **Ageing population (Envejecimiento de población).**  
Ageing population is a population that has more elderly people than young people.

#### 2.- Compare the life expectancy of men and women in Spain.

SPAIN: LIFE EXPECTANCY BY AGE AND SEX 1900-2017



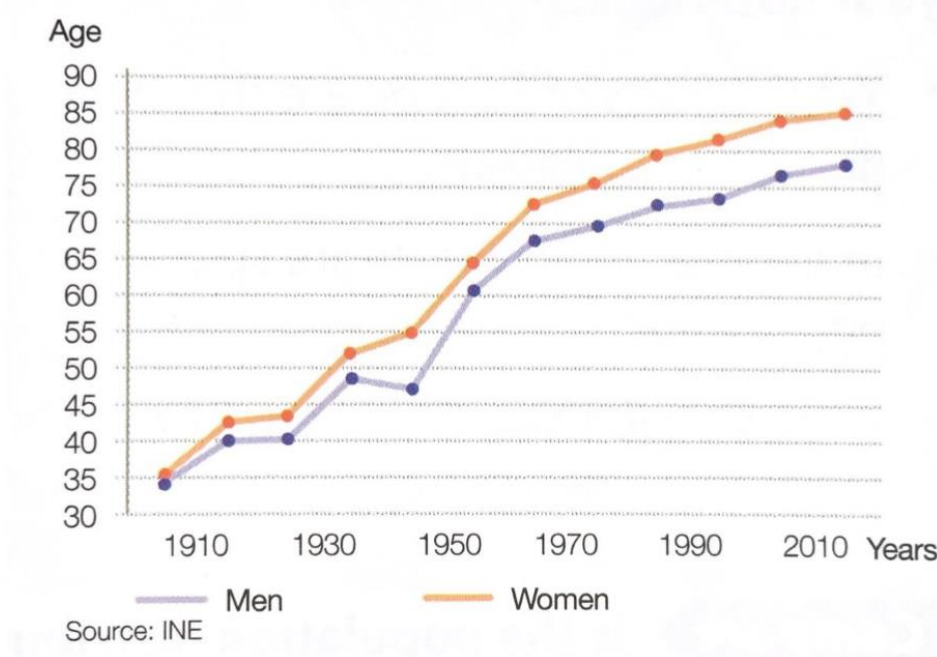
Look at the bar graph. Answer the questions.

- **What is the title of the bar graph?**  
The title is Life expectancy by age and sex 1900-2017
- **Look at the key. What do the two colours mean? Male and female.**

- Look at the vertical axis. What does it show? **It shows age**
- Look at the horizontal axis. What does it show? **It shows years**
- Who lives longer? Men or women? **Women live longer than men.**
- In general, did male and female life expectancy increase or decrease between 1910 and 2017?

**Life expectancy has increase between 1910 and 2017 because of advances in medicine and improvements in living and working conditions.**

**3.- Look at the graph. Choose the sentence that describes what it shows.**



- a) **People in Spain live longer than before.**
- b) There are more elderly people in Spain than young people.

**4.- Calculate the population density.**

$$\text{Population density} = \frac{\text{Number of people}}{\text{Surface area (km}^2\text{)}}$$

PROVINCE	POPULATION	AREA	POPULATION DENSITY
Soria	90,040	10,306 km <sup>2</sup>	<b>8,73 inhabitants/km<sup>2</sup></b>
Valencia	2,544,000	10,807 km <sup>2</sup>	<b>235,40 inhabitants/km<sup>2</sup></b>
Madrid	6,477,000	8,030 km <sup>2</sup>	<b>806,60 inhabitants/km<sup>2</sup></b>
Málaga	1,629,000	7,308 km <sup>2</sup>	<b>222,90 inhabitants/km<sup>2</sup></b>